



WMS 200 110V

Water Management System

The WMS 200 Water Management System offers the user a high-capacity system in a compact design. With dual functionality in a single unit, providing heated water for showering, and a dual filtration system ensuring wastewater is decontaminated and discharged safely, making it the perfect accessory for dealing with hazardous substances. The design makes the unit highly portable and ideal for providing mobile or temporary showering facilities. WMS units are frequently used in conjunction with a SMH modular decontamination systems.

The ultra compact design makes it extremely portable and practical to maneuver through tight doorways and small rooms.

The fully programmable Intelligent Water Management System is equipped with dual immersion heaters, capable of heating 200L.

The units comes fitted with a simple control panel which allows for maximum control with minimum fuss. We've designed our control panel with usability at its core, so you can do the things you need to as quickly and easily as possible.



Rapid water heating



At a glance

- Available to buy or hire – see overleaf or speak to your local branch about hiring a unit.
- Large capacity 200L storage tank.
- Portable and easy to manoeuvre.
- Conforms to all relevant British Standards and designed for ease of use – see overleaf for more details.
- Robust polypropylene housing which is sturdy and easy to clean.
- Wide range of spare parts and accessories available.
- Full servicing and repairs available from your nearest SMH branch – we recommend a full service at least once every six months.

Available to buy or hire – contact your nearest branch

Romsey
01794 52 4000
romsey@smhproducts.com

Bristol
0117 403 5830
bristol@smhproducts.com

London
01277 810035
london@smhproducts.com

Midlands
0121 328 6000
midlands@smhproducts.com

Leeds
01132 799003
leeds@smhproducts.com

Glasgow
0141 556 6600
glasgow@smhproducts.com

Burscough
0174 426 660
burscough@smhproducts.com

Washington
0191 456 6002
washington@smhproducts.com

Technical Data

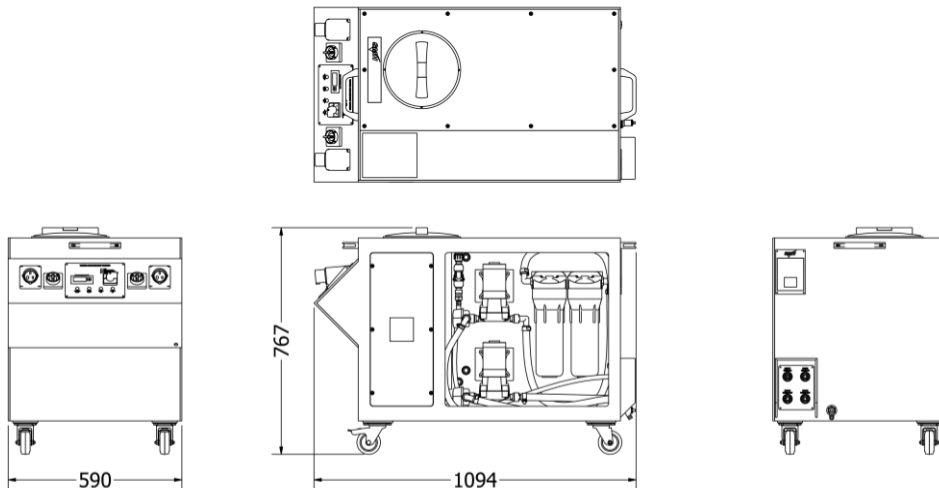
Specifications

Case material	Polypropylene
Case colour	Grey
Tank capacity, max. (L)	200
Mobility	4x Castors (2x Braked)
Dry weight (kg)	45
Ingress protection	IP44
Voltage (V)	110-120
Mains frequency (Hz)	50
Supply (no. of power inlets)	2
Power, input, max. (W)	2x 1250
Current, nominal (A)	2x 12
Isolation on/off switch	✓
Electrical protection	2x 16A MCB
Noise level, max (dBA) <small>Measured at 1m distance</small>	40
Flow rate (L/min) ±10%	6
Temperature liquid, max. (°C)	40
Filter bottles	2
Microfibre filter cartridges	1x 25µm, 1x 5µm
Unit length, A (mm)	1094
Unit width, B (mm)	590
Unit height, C (mm)	767

Model Variants

- WMS 200 110V (Standard)
- WMS 200 230V (Optional)

Dimensions



Features

- New ultra compact design allows the unit to fit through 600mm-wide doorways.
- Integrated rotary isolators allow safe disconnection of electrical supply during servicing or maintenance.
- Immersion heater elements are thermostatically controlled and have built-in thermal cut outs.
- Water buffer system prevents the tank from fully draining during operation, thus ensuring the immersion heater remains fully submerged.
- Automatic tank fill and shut off, with a low water level alarm – both visual and audible.

Certification

- All WMS units are PAT and fully function tested.
- All units are manufactured at an ISO 9001 certified facility.

Included Components

- 2x 5m 110V 16A power cords
- 10" 25µm filter cartridge
- 10" 5µm filter cartridge
- User Guide

MSA 3-Stage

Code C000242



- Pair your WMS with one of our modular decontamination systems!
- Panel system provides a flexible range of assembly options.
- Easy to store and transport.
- Built from robust aluminium composite panels.