

QUALITY & SERVICE

SMH

YOU CAN TRUST



SMH Products Ltd

Design Portfolio 2024

SMH Products Ltd

Quality You Can Trust

Over 40 years ago, SMH was established as a manufacturer of fibreglass products, in 1984 SMH made the first decontamination unit, supplying the asbestos removal industry in the UK. Today, SMH enjoys a global presence with 8 active branches in the UK, France, Australia, Spain and New Zealand. We operate across 2 divisions – manufacturing and sales & distribution, providing customers with in-depth support from the initial enquiry right through to the onsite delivery and not forgetting our exceptional after care service.

Leading Manufacturer

SMH are a leading manufacturer of specialist equipment to all industries and sectors where workers are at risk of contamination. From our manufacturing base in South Shields, we design and build specialist decontamination equipment that deal with asbestos removal that can also be adapted for a range of industries and different hazardous materials.

Local Branches

With 8 branches nationwide, we are on your doorstep for all your needs. Each of our branches stocks everything you need for a decontamination project – whether you want to buy or hire, we can help.



SMH Products Ltd

Quality

As winners of the Supplier of the Year at the British Asbestos Awards, SMH Products are renowned for pushing and improving industry standards. Our products are known across the industry for their outstanding quality and longevity.

Service

A trusted partner. We work very closely with our customers offering them tailored service making sure that we deliver a complete solution that works for them every time. We can do everything from a custom design and manufacture of a product to a straightforward hire from our huge fleet. Whatever you need.

Trained engineers in our branches provide local servicing, testing, repair and maintenance services for a range of products and equipment.

Keeping You Compliant

SMH Products undertakes to supply only safety equipment and/or related services that fully comply with the standards and regulations and claims made relating to those products and/or related services. Where appropriate, SMH Products will maintain up to date technical files and associated documentation to ensure that regulatory compliance information can be supplied upon request.



A yellow warning sign is mounted on a wall. The sign is rectangular with a white border and features the word 'Danger' in a large, bold, black font with a horizontal line underneath. Below 'Danger', the word 'Asbestos' is written in a slightly smaller, bold, black font. The sign is attached to a wall made of light-colored wood chipboard above a concrete ledge. A small yellow triangular warning symbol is visible above the sign.

Product Range



Decontamination Systems

SMH DCU's provide decontamination facilities for workers operating in environments where airborne contaminants are a potential risk, but a permanent decontamination facility is impractical, such as in demolition and remediation work or emergency situations.



Negative Pressure Units

Filtering contaminated air is critical to controlling the spread of hazardous substances. SMH's air filtration units are designed to tackle a wide range of contaminants, including asbestos, smoke, dust, pollen, bacteria, fungi and viruses.



WMS & Filtration

Water Management Systems (WMS) offer the user a dual-function system, providing heated water for showering and a dual-filtration system ensuring wastewater is decontaminated and discharged safely, making it the perfect accessory for dealing with hazardous substances.

Decontamination Systems

(BESPOKE OPTIONS AVAILABLE)



Mobile



- ✓ Trailer-based mobile decontamination unit with an onboard Negative Pressure Unit (NPU)
- ✓ 3, 4, or 5-stage design
- ✓ LPG (Standard) / Electric (Option) / Dual-Fuel (Option)

Welfare



- ✓ Welfare facilities, including seating, worktop, sink, fridge, microwave and kettle
- ✓ Toilet facilities, including a larger sink, hot water, mirror, soap dispenser, cassette toilet, toilet brush and hygiene bin

Static



- ✓ Static decontamination units provide ideal facilities for long-term or permanent site, offshore or dangerous sites
- ✓ All-electric decontamination unit build into a 20-foot shipping container.



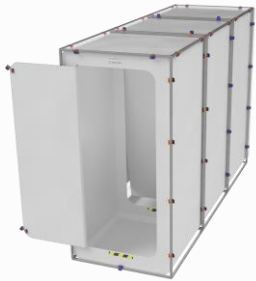
Decontamination Systems

(BESPOKE OPTIONS AVAILABLE)



Modular

- ✓ Modular decontamination facilities are ideal for hard-to-reach sites, such as blocks of flats, or sites where space is limited, and a static or mobile-based unit is not a suitable option



Tents

- ✓ Disposable tent system suitable for use as a multi-stage airlock.
- ✓ Quick & easy to setup – save time vs traditional timber and polythene set ups.



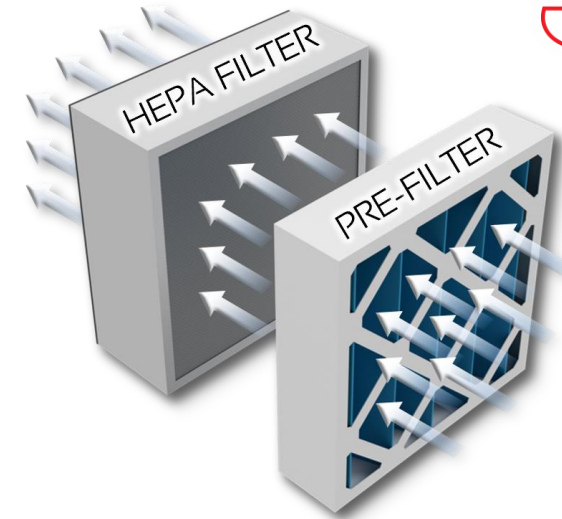
Negative Pressure Units

(*INDUCTION & ECO VARIANTS AVAILABLE)



NPU 500*

- ✓ Smallest unit in range, lightweight & portable, providing a nominal airflow of 500 m³/hr.
- ✓ "DECON" variant is used onboard DCU's.
- ✓ "MSA" variant is used for Modular Systems.



NPU 1300*

- ✓ Small units in range – lightweight & portable, providing a nominal airflow of 1300 m³/hr, exceeding HSE requirements for enclosures.
- ✓ Typically used in controlled removal of asbestos-containing materials (ACM's) and hard to access areas.



NPU 2500*

- ✓ Medium unit in range, providing a nominal airflow of 2500 m³/hr.
- ✓ Housed in a weld-free, polyethylene case, making it light and sturdy enough to withstand daily use on site.
- ✓ Versatile unit suited for most jobs.



Negative Pressure Units

(*INDUCTION & ECO VARIANTS AVAILABLE)



NPU 5000*

- ✓ Medium unit in range, providing a nominal airflow of 5000 m³/hr.
- ✓ Housed in a weld-free, polyethylene case, making it light and sturdy enough to withstand daily use on site.
- ✓ Versatile unit suited for most jobs.



NPU 10,000 ECO

- ✓ Largest unit in range, providing a nominal airflow of 10,000 m³/hr.
- ✓ Fitted with an advanced EC digital motor – soft-start technology, lower operating costs, excellent power-to-performance efficiency.



WMS & Filtration

(WATER MANAGEMENT SYSTEMS)



WMS 200

- ✓ SMH's Water Management System (WMS) 200 features dual immersion heaters, capable of heating up to 200L of water, and a simple-to-use control panel.
- ✓ Ultra-compact design makes it portable and practical to manoeuvre through tight doorways and small rooms.



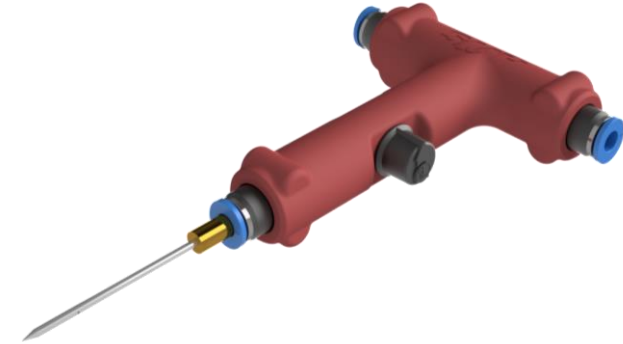
PFS 18

- ✓ SMH's pump filter systems (PFS) are compact and portable water filtration systems for use in the removal of contamination from water sources.
- ✓ The unit has a flow rate of 18 Lpm and is fitted with two wound cartridge filters (25µm and 5µm).



WSM 150

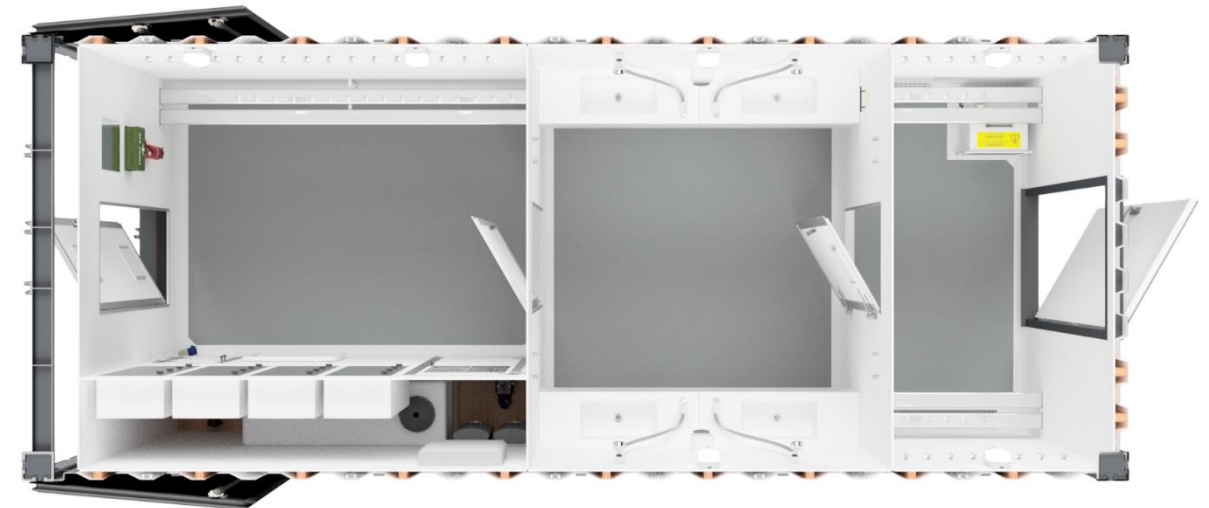
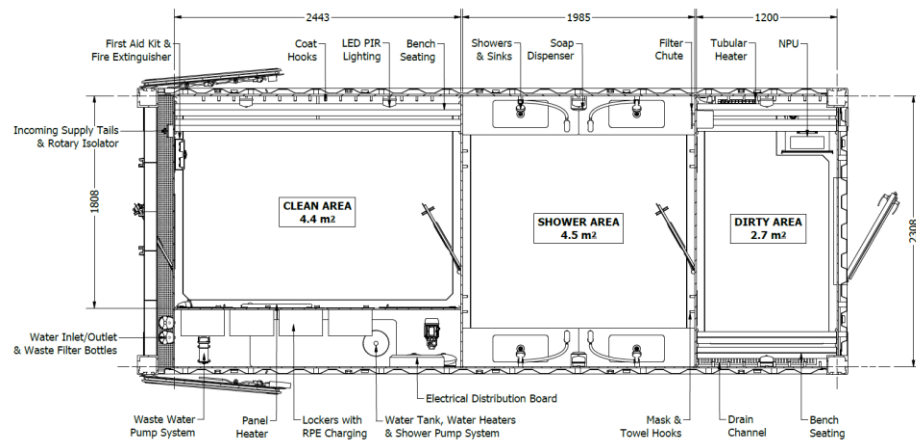
- ✓ SMH's Wet Strip Machine (WSM) delivers the controlled wetting of asbestos-containing materials (ACM's) by multipoint injection or spraying of liquid to suppress the release of airborne asbestos fibres.
- ✓ Has a water-storage tank of 150L.



Bespoke Solutions

De-Containers

- ✓ 3-stage all-electric decontamination unit built in a 20-foot shipping container.
- ✓ The unit consists of a clean, shower and dirty area, all with GRP flooring.
- ✓ The clean area consists of lockers with charging ports for RPE, seating, water tanks, and a supporting pump system.
- ✓ The shower area consists of electric showers, sinks, mask hooks and soap dispensers.
- ✓ The dirty area consists of seating and a Negative Pressure Unit (NPU) providing negative pressure for the whole unit.



Bespoke Solutions

Mobile Welfare Unit

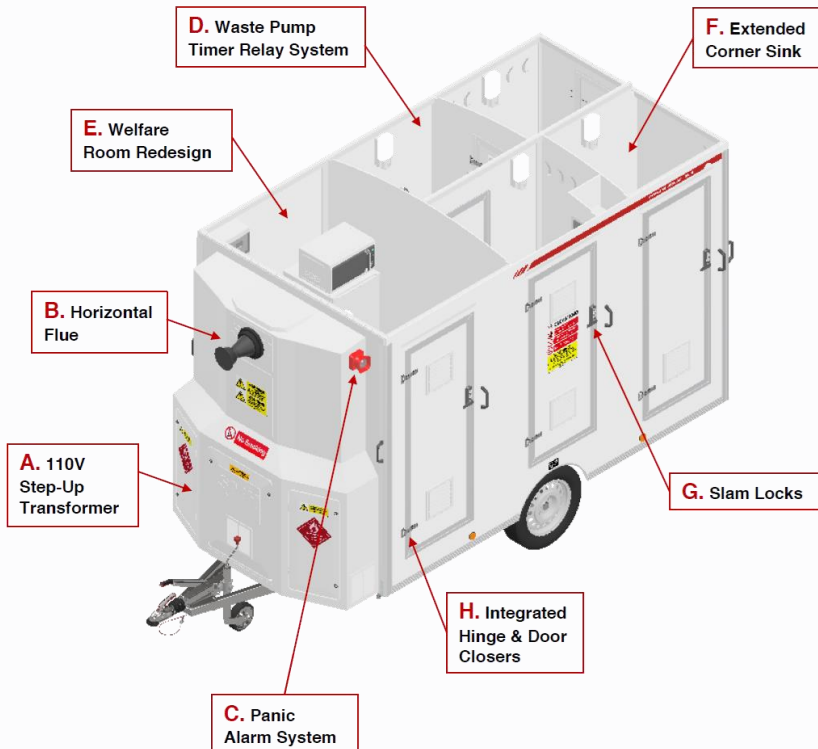
- ✓ Compact all-electric welfare unit, measuring only 4.6m long, and providing spacious welfare and toilet facilities for up to 4 workers.
- ✓ The unit features:
- ✓ Table and bench seating with power sockets for charging devices;
- ✓ A kitchenette including a worktop, microwave, kettle, sink and portable water container, perfect for lunches and breaks;
- ✓ Four storage lockers with door locks to securely hold your valuables;
- ✓ A toilet facility with a chemical WC and removable waste-holding tank;
- ✓ LED PIR lighting and electric space heating in both rooms ensure the unit



Bespoke Solutions

Mobile DCU's

- ✓ Bespoke decontamination unit featuring various improvements and changes to the base DCU+ welfare unit



Bespoke Solutions



2-Metre MSA

- ✓ Customer requested a 2m x 2m, 3-stage modular system, suitable for up to 8 operators.
- ✓ Clean area consists of lockers with charging ports for RPE, space heaters, fixed-bench seating, coat hooks and a mirror.
- ✓ Shower area consists of 2 showers, supplied by an instantaneous water heater, with mask/towel hooks.
- ✓ Dirty area consists of a Negative Pressure Unit (NPU) providing negative pressure for the whole unit, as well as fixed-bench seating, space heater, coat hooks, and a mirror.

