



440NX

Compact Cordless Scrubber Dryer

UNSTOPPABLE PERFORMANCE

70% Saving in Cleaning Costs

80% Lower Water Use

- » One-Pass Performance
- » Agile & Lightweight
- » NX300 Pro Cordless Network
- » 3-Year Warranty



Numatic

Why Buy 440NX

NUCLEAN COMPACT 440

The 440NX Compact Cordless Scrubber Dryer delivers fast, effective sustainable cleaning across all hard-floors.

Often the only solution when cleaning in small and congested areas has been traditional mopping, typically leaving floors wet with inconsistent results. Lightweight and easy to use, the 440NX leaves floors clean, dry and safe whilst reducing labour costs by 70% and water use by 80%.^{*1}



Key Features & Benefits

One-Pass Performance

One-pass cleaning performance is achieved by applying brush pressure and a powerful drive motor with the right amount of water in the right place.

Pay Back in 5 Minutes

Switching to the 440NX for just 5 minutes a day instead of mopping makes big savings, returning the total machine cost in 3 years.^{*1}

Agile & Lightweight Handling

Powerful brush motors deliver deep cleaning with agile and lightweight assisted handling. Easily navigating obstacles in congested areas, gliding over floors for controlled, effortless cleaning.

Easy Cleaning Park-Up Mode

"Park-Up" feature allows users to quickly park-up to move obstacles or carry out other cleaning tasks.

3-Year Warranty

Backed by a rock-solid 3-year warranty, guaranteeing dependable performance and long-term reliability, clean after clean.

Enhanced Sustainability

Leading sustainability with the use of ReFlo recycled plastics, saving over 5000L of water, reducing chemical usage by 80%, and lowering energy consumption. The 440NX is made using a minimum 20% recycled plastic content, including accessories.^{*2}

One Fits All Productivity

The NX300 Pro Cordless Network brings the convenience and performance of professional cordless cleaning across our growing interchangeable battery range.

Switching to a 440NX for just **5 minutes a day** instead of mopping makes **big savings**, returning the total machine cost in **3 years**.^{*1}

Specifications

2.2L Capacity	3L Recovery Tank	100W Vac Motor	140RPM Brush Speed
Power 36V		Brush Motor 2x200W	
Runtime Up to 80mins		Recharge Time 1hr 80% / 2hrs 100%	
Deck Size 440mm		Brush/Pad Size 2x220mm	
Net Weight 21.3kg		Dimensions (WxLxH) 520x450x1180mm	

^{*1} Time saving of 70% vs mopping / wage £11 per hour, 100sqm 7 days per week.
Water use by 80% based on replacing 16L mopping system, cleaning 7 days per week.

^{*2} 20% represents the minimum use of recycled plastic content, including accessories, excluding NX300 charger.

Why Buy 440NX

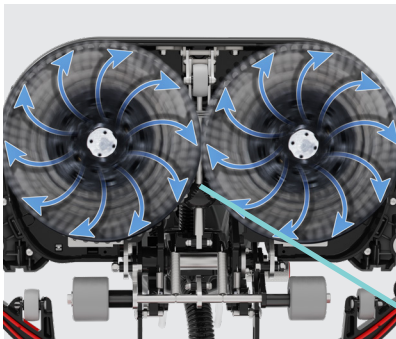
Key Features



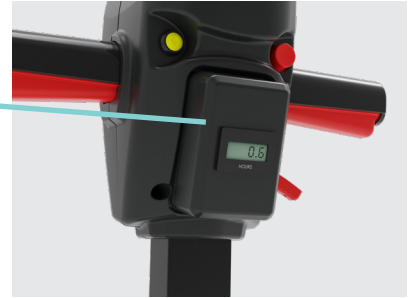
Easy to Use
Simple to set up and easy to use.



Easy Empty
Removable 3L recovery tank.



Smart Water Use
Centrifugal Water System ensures precise distribution across the brush or pad.



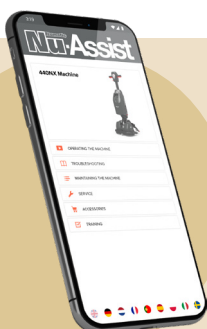
Hours Meter
Accurately track usage time.



Simple Fill
Removable clean tank with no-spill cap.



Foot-operated Brush Deck
Foot-operated floor tool eliminates frequent bending for operator.



Nu-Assist

Increase Cleaning Productivity

- > 24/7 Access to Multilingual Training
- > On-hand Troubleshooting & Maintenance
- > Increased Cleaning Productivity
- > Product Training

Scan Me



440NX Accessories

Ultimate Versatility

A comprehensive range of accessories are available to achieve professional results, whatever the challenge.

Ten-Tec High-Performance Brushes

- Lasts 10x longer than a standard Numatic Polyscrub brush
- Replaces up to 100 standard Numatic red pads
- Improve cleaning results compared to standard Numatic brushes
- Reduces the need for chemical additives, lowering cleaning costs

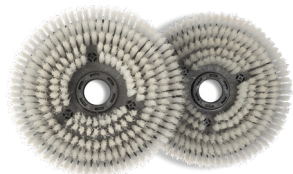
Available for use across the Numatic Scrubber Dryer range.

Ten-Tec Brush

High-performance scrubbing brush.
Supplied as pack of 2.

PN: 918296

Suitable for: • General Scrubbing
• Daily Cleaning



Nyloscrub Brush

Suitable for when lighter scrubbing is required. Supplied as pack of 2.

PN: 911931

Suitable for: • Daily Cleaning

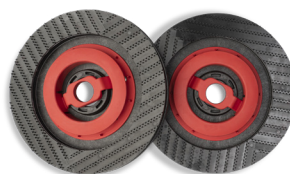


Long-life Scrubbing Brush

Can provide extended cleaning life in comparison to standard scrubbing brushes. Supplied as pack of 2.

PN: 913800

Suitable for: • General Scrubbing
• Daily Cleaning

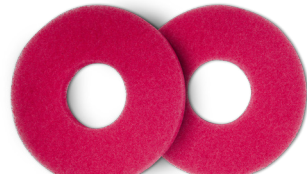


PadLoc Drive Board

A simple, effective and easy to use system. Pads are located securely and perfectly centred every time. Supplied as pack of 2.

PN: 911844

Suitable for: • General Use

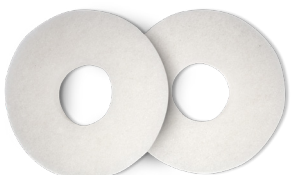


NuPad Red

General use floor cleaning pad for hard-floors. Removes light dirt and scuff marks. Supplied as pack of 10.

PN: 912353

Suitable for: • General Use
• Daily Cleaning



NuPad White

Delicate surface cleaning pad for hard-floors. Supplied as pack of 10.

PN: 912354

Suitable for: • Ultra-light Use
• Delicate Cleaning

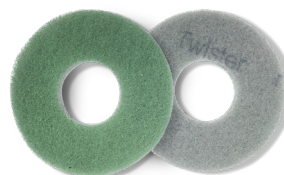


NuPad Green

Heavy-duty cleaning pad for hard-floors. Removes dirt and scuff marks. Supplied as pack of 10.

PN: 912352

Suitable for: • Heavy-duty Use
• Daily Cleaning



Green Twister Pad

Specially developed with billions of microscopic diamonds. Suitable for use on hard-floors. Supplied as pack of 2.

PN: 912355

Suitable for: • Clean & Polish
• Daily Cleaning



Blade Set

For maximum cleaning contact with the floor and an inner harder shore core leaving a dry streak-free floor.

Supplied as pack of 2.

PN: 913810



Solution Tank

PN: 913825



Transport Wheelset

PN: 914088



NX300 Battery

PN: 913686

NX300 Charging Dock

PN: 911334

NX300 Dual Charging Dock

PN: 910820

NX300 Mains Cable for Charging Docks

UK **PN: 912365**
EURO **PN: 912361**
SWISS **PN: 912364**
AUS/NZ **PN: 912360**
USA **PN: 912362**
S.AFRICA **PN: 912363**
JPN **PN: 913041**



NX300 Battery



NX300 Charging Dock



NX300 Dual Charging Dock with Mains Cable

UK **915748**
EURO **915749**
SWISS **915750**
AUS/NZ **915751**
USA **915752**
S.AFRICA **915753**
JPN **915754**



NX300 Battery 3-Year Warranty.

Numatic

numatic.com

©Numatic International Limited 2025. All rights reserved. Specification subject to change without prior notice.