



# DCU 151+

Mobile decontamination units

SMH decontamination units provide mobile decontamination facilities for workers operating in environments where airborne contaminants are a potential risk but a permanent decontamination facility is impractical, such as in demolition and remediation work or emergency situations.

The DCU 151+ is a variation of the most popular unit in the SMH DCU Range. It is compact at 4.5m in length - with a single shower it is suitable for up to four workers to meet UK asbestos regulations with the addition of welfare space and toilet facilities in one compact unit.

The unit has three stages ('dirty', shower and 'clean' areas) and exceeds the requirements of HSG 247, *Asbestos: the licensed contractors' guide*, and the HSE's *Control of Asbestos Regulations 2012 Approved Code of Practice, Regulation 23*. The DCU 151+ typically has a built-in generator, but also has the option to be delivered as a fully electric unit, run from a mains supply.

It features an on-board water tank to supply clean water, boiler-fed or electric showers, and a pumped filter system to take away and filter waste water.

The unit features welfare facilities including a sink, microwave and mini fridge at the front, and toilet facilities in the rear



## At a glance

- The Unit Consists of three key areas:
  - The Decontamination Area with three decontamination Stages:  
*1 x 'clean' (4 lockers with charging points for respirators, bench seat, tube heater, coat hooks);*  
*1 x 'shower' (1 x shower, 1 x sink for mask washing);*  
*1 x 'dirty' (1x NPU, bench seat, tube heater)*
  - The Welfare area with basic facilities such as microwave, mini fridge and sink
  - The toilet facility
- Compact and light - 4.5m and only 960 kg
- Manufactured from smooth moulded GRP, the unit is waterproof and easily cleaned after use
- Easy to maintain with external access to generator, water pump, waste water filter system and gas bottle
- Heated throughout to allow for year-round use
- Available to buy or hire – quote C000454 to buy or speak to your local branch about hiring a unit

## Contact your nearest branch

Romsey  
01794 52 4000  
romsey@smhproducts.com

Bristol  
01174033665  
bristol@smhproducts.com

London  
01277810035  
london@smhproducts.com

Cardiff  
02920780790  
cardiff@smhproducts.com

Birmingham  
01213286000  
birmingham@smhproducts.com

Leeds  
01132799003  
leeds@smhproducts.com

Glasgow  
0141 556 6600  
glasgow@smhproducts.com

St Helens  
0174426660  
sthelens@smhproducts.com

Washington  
01914566002  
washington@smhproducts.com

Nottingham  
01623720121  
nottingham@smhproducts.com

# Technical specification for the DCU 151+

## Specifications

Features	Dual Fuel	Electric
<b>Electrical</b>		
1 x 3kVa Generator (Max. 13A)	X	
Lights (0.17A each)	X	X
4 x Lockers with electrical supply for mask charging (16A Circuit)	X	X
2 x Twin sockets in Welfare area (16A Circuit)	X	X
1 x Electric shower (32A)		X
1 x Radiator (3.2A)	X	X
2 x Tube heaters (0.26A Each)	X	X
1 x Decon NPU 300 (0.25A)	X	X
1 x Pump Filter System (15A Max.)	X	X
<b>Gas</b>		
1 x LPG room sealed water heater	X	
<b>Water</b>		
1 x 100L tank (internal fill points or mains fed)	X	X
Pumped waste water filter system with high efficiency microfibre filters	X	X
1 x Boiler fed showers	X	
1 x Electric showers		X
1 x Welfare sink	X	X
1 x Toilet sink	X	X
<b>NPU (under bench in 'dirty' area)</b>		
1 x Decon 300 (230m <sup>3</sup> /hr)	X	X
1 x Prefilter (296 x 296 x 47)	X	X
1 x HEPA filter with an efficiency of 99.995% at 0.3µm (305 x 305 x 68)	X	X
<b>Towing</b>		
Single axle	X	X
Max design speed of 140 km/hr	X	X
Wheels & tyres 175R 13C	X	X
<b>Weight</b>		
Unladen: 960 kg	X	X
Max. static (unsupported): 1300 kg	X	X

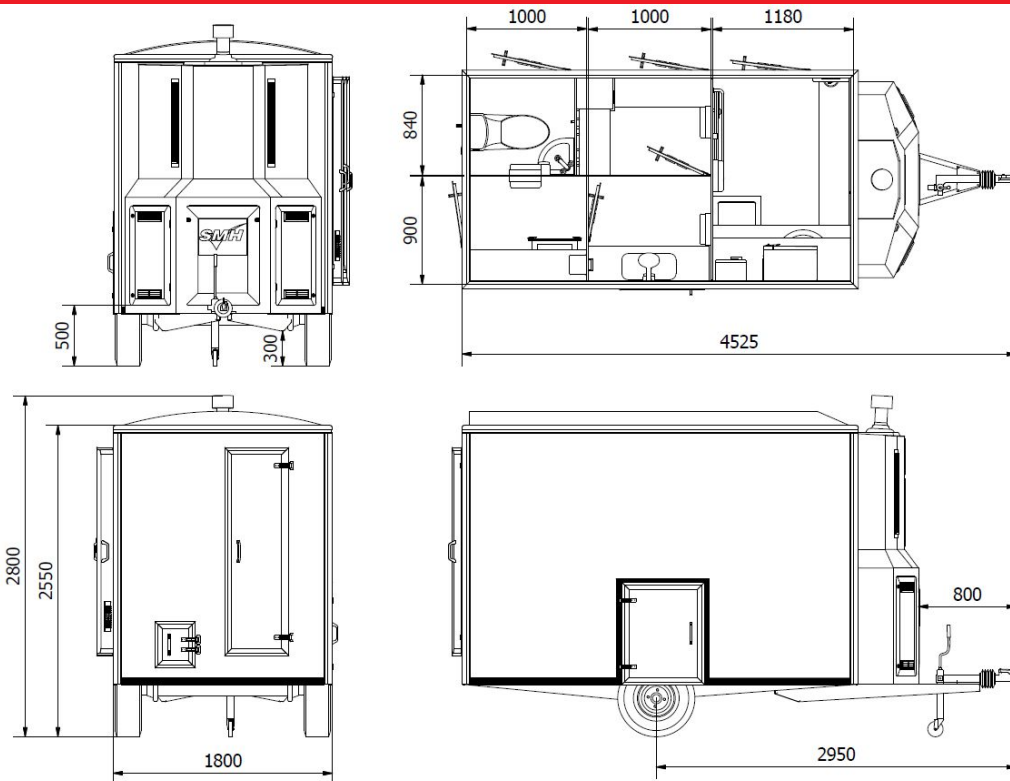
## Welfare area



## Separate toilet



## Dimensions (mm)



SMH Equipment Ltd, a part of the SMH Group • SMH House, Maxwell Street, South Shields, NE33 4PU, UK  
 Tel: 0191 456 6000 • Fax: 0191 456 7777 • enquiries@smhproducts.com